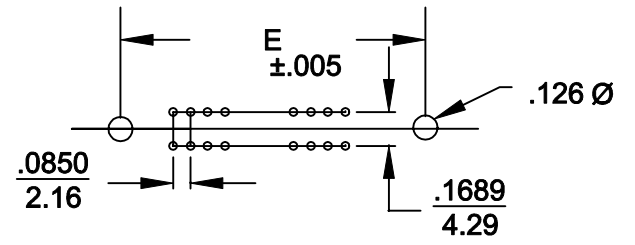
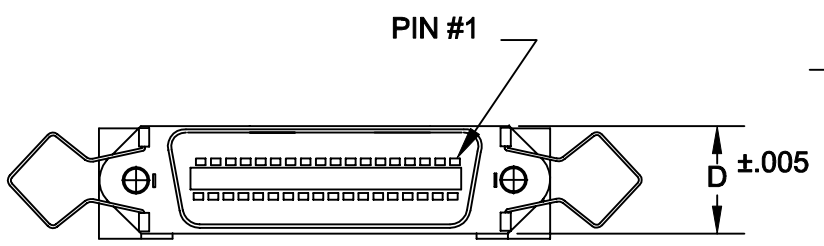
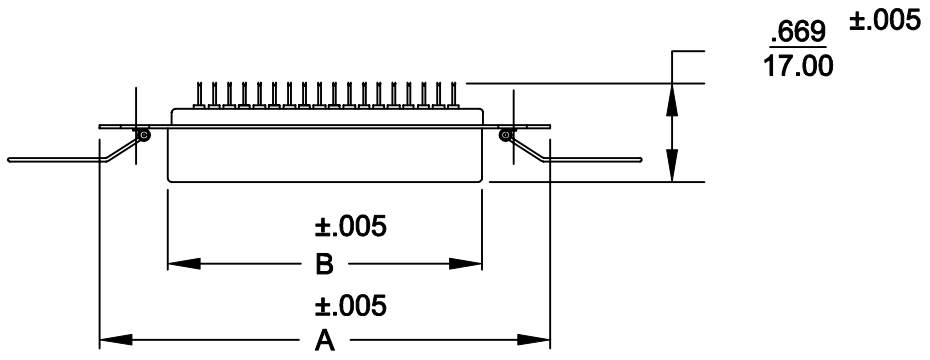


DESCRIPTION: .085" RIBBON SOLDER CUP

	A	B	C	D	E
14	1.729	.992	.476	.602	1.417
24	43.92	25.20	12.10	15.30	35.99
36	2.665	1.925	.476	.602	2.352
50	67.69	48.90	12.10	15.30	59.74
	82.78	64.47	12.10	15.30	74.85



111-XXX-203-001

SERIES \_\_\_\_\_  
 POSITIONS \_\_\_\_\_  
 014  
 024  
 036  
 050

GENDER \_\_\_\_\_  
 2 = FEMALE

TERMINATION \_\_\_\_\_  
 3 = SOLDER CUP


SHELL PLATING \_\_\_\_\_  
 3 = NICKEL

HARDWARE OPTIONS \_\_\_\_\_  
 00 = NO HARDWARE

PLATING OPTIONS \_\_\_\_\_  
 01 = GOLD FLASH

**MATERIALS:**

**INSULATOR:** GLASS-FILLED THERMOPLASTIC  
 UL RATED 94V-0  
**CONTACTS:** COPPER ALLOY  
**ELECTRICALS:**  
**CONTACT CURRENT RATING:** 5 AMPS  
**DIELECTRIC WITHSTANDING VOLTAGE:** AC 1200 R.M.S.  
**INSULATION RESISTANCE:** 1000 mohms MINIMUM AT 500V DC  
**CONTACT RESISTANCE:** 30 mOHMS MAXIMUM  
**OPERATING TEMPERATURE:** -55°C TO +125°C

	THESE DRAWINGS AND SPECIFICATIONS ARE THE PROPERTY OF NorComp AND SHALL NOT BE REPRODUCED, COPIED OR USED AS THE BASIS FOR THE MANUFACTURE OF SALE OF APPARATUS WITHOUT WRITTEN PERMISSION.		DRAWN: WAYNE ROBBINS	DATE: 8-23-98
			CHECKED: PAM JENKINS	DATE: 8-24-98
NorComp		SCALE:	SHEET 1 OF 1	REV 5
		DWG NO. 111-XXX-203-001		